

ALASKA DIVISION OF HOMELAND SECURITY & EMERGENCY MANAGEMENT

SITUATION REPORT 23-333 • November 29, 2023



Toll-Free 1.800.478.2337

Anchorage Area 907.428.7000

SEOC 907.428.7100

<p><u>SEOC Preparedness Level</u></p> <p>Level 2 – Heightened Awareness</p>	<p>http://ready.alaska.gov</p>	<p><u>National Terrorism Advisory System:</u></p> <p>Read the NTAS Bulletin here</p>
<p><u>Maritime Security (MARSEC)</u> Level:1- Minimum Appropriate Security Measures</p>	<p>WHO Novel Coronavirus Pandemic (COVID-19): 2019 Novel Coronavirus</p>	<p><u>Alaska Military Installation Force Protection Level:</u> FPCON Bravo</p>

(Significant changes from previous situation reports are red.)

Significant Issues:

Wrangell Landside Disaster:

Double lane emergency access routes opened through the slide with electrical power restored to southside residents. Wrangell Police will conduct a limited access schedule for residents on either side of the slide allowing residents to travel into town for supplies. Emergency response and recovery operations continue in coordination with debris removal and reactive search operations. State IA Hotline and website are live for residents to apply for Individual assistance for personal property damages.

Prince of Wales Island, including City of Klawock and City of Craig:

Multiple slide locations along Big Salt Lake Rd in Klawock were listed as well as slides along the Hollis Road, and the Craig to Klawock Rd. City of Klawock was unaware of any slide areas within city limits that would need assistance, slide area that were on DOT roads have already been cleared. City of Craig reported flooded roads, drainage structures and culverts.

Diomedede – Potential Building Structural Collapse

SEOC continues to work with the City of Diomedede, Bering Strait School District, Kawerak, DOT, ANTHC and DEC to evaluate any potential impacts from the building collapse.

State of Alaska Department of Health (DOH)

The DOH stands ready to assist with all aspects of public health and in the event of a public health emergency, supported by the SEOC and other state departments as required. For current information, see:

<https://health.alaska.gov/dph/Pages/default.aspx>

<https://health.alaska.gov/dph/Emergency/Pages/prepared/default.aspx>

NTAS Bulletin

The U.S. Department of Homeland Security issued an updated National Terrorism Advisory Bulletin on May 24, 2023. The current and expired bulletins can be viewed at the below link.

<https://www.dhs.gov/national-terrorism-advisory-system>

Travel Alerts and Conditions

For current driving conditions, dial 511 or link to <https://511.alaska.gov/>

Barry Arm Landslide / Tsunami Risk

For the latest information on the Barry Arm Landslide and Tsunami risk, click here:
<https://dggs.alaska.gov/hazards/barry-arm-landslide.html>

Earthquakes

United States Geological Service (USGS) Earthquake Information: <http://earthquake.usgs.gov/>
National Tsunami Warning Center: <http://tsunami.gov/>

Alaska Volcanoes

Great Sitkin Alert Level: **Watch** and Aviation Color Code: **Orange**
Shishaldin Alert Level: **Watch** and Aviation Color Code: **Orange**
Trident Alert Level: **Advisory** and Aviation Color Code: **Yellow**
For Alaska Volcano updates, go to: <https://www.avo.alaska.edu/>

Air Quality Index (AQI) Advisories

For the most up to date Air Quality Index Advisories:
<http://dec.alaska.gov/Applications/Air/airtoolsweb/Home/Index>

Spills of Oil and Hazardous Substances

The Alaska Division of Environmental Conservation (ADEC) Spill Prevention and Response page is located at:
<https://dec.alaska.gov/spar/>

Alaska Cyber Security Information

State Employees may sign up for cyber security notifications and alerts at
<https://oit.alaska.gov/security>

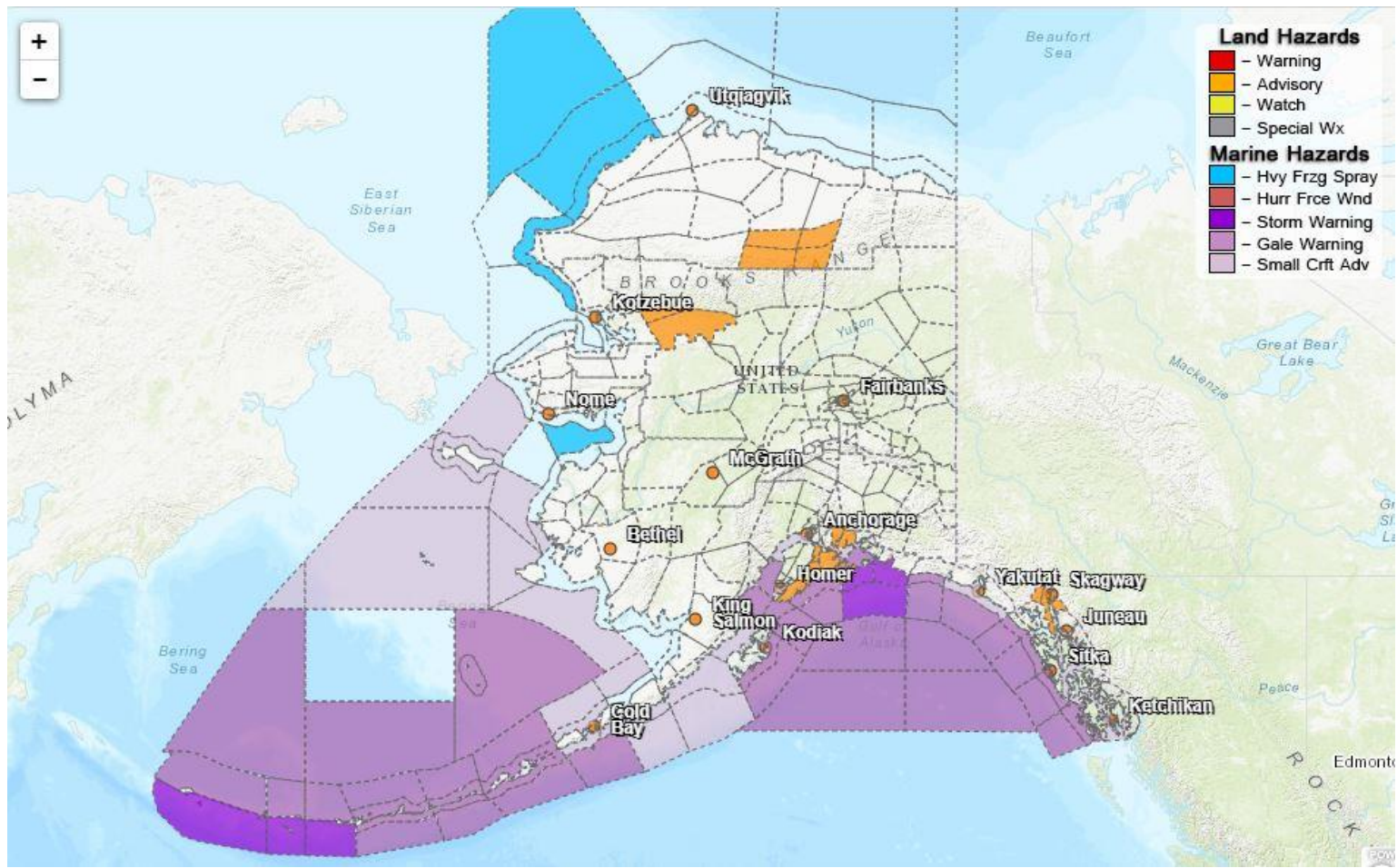
Cybersecurity and Infrastructure Security Agency (CISA)-Cybersecurity Services and Tools:
www.cisa.gov/free-cybersecurity-services-and-tools

Avalanche Hazards:

Turnagain Pass – Considerable at altitudes above 1000' and Moderate at mid and lower altitudes

For more information and the most current avalanche conditions go to <https://alaskasnow.org>

Significant Weather:



Winter Weather Advisory:

- **Haines Borough and Klukwan** – Heavy snow is expected to be along the highway with up to 6 inches possible. Heaviest snowfall rates will be late Wednesday evening into early Thursday morning.
- **Lower Kobuk Valley** – Additional snow accumulations of up to one inch. Winds gusting as high as 35 mph until 3 PM this afternoon.
- **Central Brooks Range** – Snow and blowing snow with low visibility expected until 3 PM this afternoon. Total snow accumulations of up to one inch. Visibility one half mile or less at times. South winds gusting to 40 mph.
- **Western Prince William Sound, Turnagain Pass** – Snow expected. Total snow accumulations of 10 to 16 inches with winds gusting 15 to 25 mph ending 9 PM this evening.

For more information and the most current weather, Watches / Warnings / Advisories go to:

<https://www.weather.gov/arh/>

The Next Situation Report will be **November 30, 2023**. A significant change in the situation or the threat level will prompt an interim report. This report is posted on the internet at

<https://ready.alaska.gov/sitrep>.

To register for email distribution, go to <http://list.state.ak.us/mailman/listinfo/dhsem.situation.report>.
Direct questions regarding this report to the SEOC at 907-428-7100 or seoc@alaska.gov